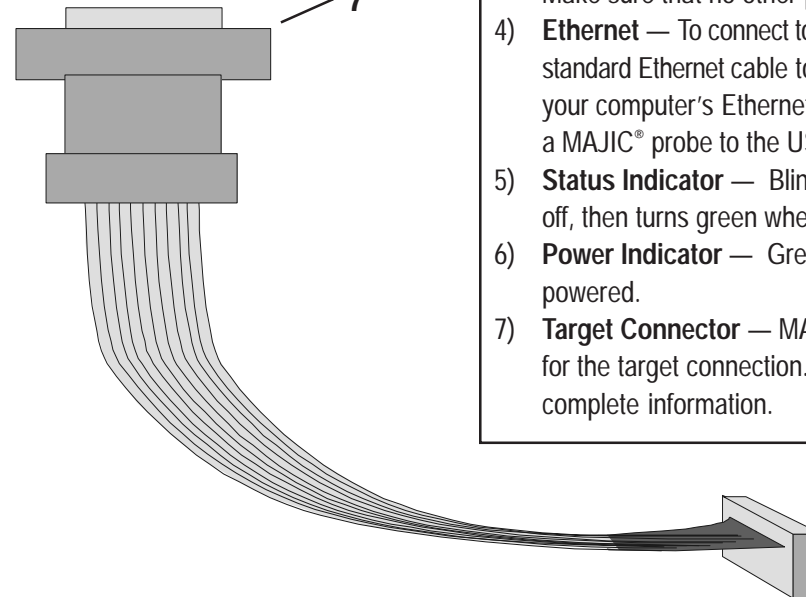
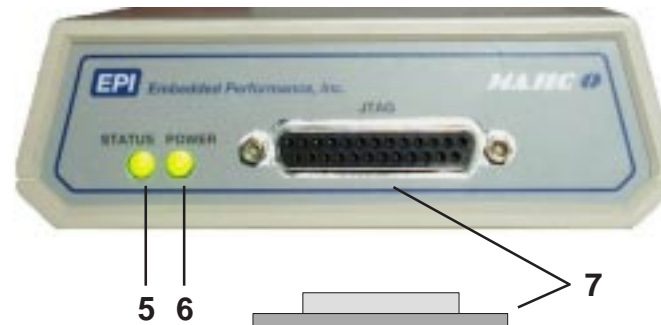
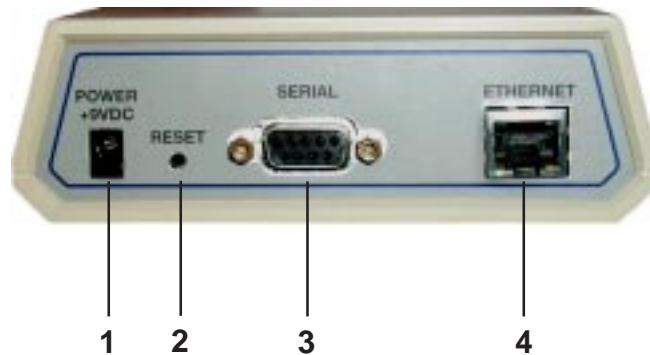




# Quick Start Guide — MAJICO and MAJIC-LT

0380-0145-10 Rev. 1.1

www.epitools.com • E-Mail: support@epitools.com • Phone: (408) 957-0350



## Hardware Installation

- Install the target connection cable kit from #7 to your target board. An application note included in the cable kit provides complete instructions.
- Connect the serial or Ethernet cable to #3 or #4. When using a serial port, make sure no other programs are using that port. You will need an IP address for the probe before you can connect over Ethernet. Basic instructions for configuring an Ethernet connection are provided on the opposite side of this quick start guide.
- Connect the AC side of the power supply, then insert the 9v DC plug into power input (#1). The Power LED (#6) should turn green.
- Monitor the Status LED (#5) as the probe boots up. It should blink red on power up, then go off, then turn green when ready for use.

**Note:** We recommend plugging the target board and MAJIC® probe into a power strip so that you can switch them on and off together.

## What's This?

- Power +9v DC** — MAJIC-LT and MAJICO probes come with an external universal power supply and separate power cord. Plug the 9v DC power cord into the probe's power input.
- Reset Button** — Pressing this button reboots the MAJIC® probe.
- Serial** — To communicate with the MAJIC® probe using a serial link, connect a serial cable from the DB9 connector to a free serial port on your computer. Make sure that no other programs are using that port.
- Ethernet** — To connect to the MAJIC® probe using Ethernet, either connect a standard Ethernet cable to your hub, or connect a "crossover" cable directly to your computer's Ethernet port. A USB/Ethernet adapter may be used to connect a MAJIC® probe to the USB port on a Windows PC.
- Status Indicator** — Blinks red when the MAJIC® probe is powered up, then turns off, then turns green when ready for use. Red while in use indicates a problem.
- Power Indicator** — Green when the MAJIC® probe is powered up, off when not powered.
- Target Connector** — MAJIC-LT and MAJICO probes use a DB25 connector for the target connection. Each cable kit includes an application note with complete information.



MAJIC® probes and target boards are sensitive to ElectroStatic Discharge (ESD). Observe ESD precautions when connecting a MAJIC® probe to the target board.



# Quick Start Guide — EPI Development Tools Software

0380-0145-10 Rev. 1.1

www.epitools.com • E-Mail: support@epitools.com • Phone: (408) 957-0350

## Installation

1. To use with Intel® SDT, Microsoft Platform Builder, or another third party debugger, install that software first.
2. Insert the EDT CD in your CD drive. If the installer does not start automatically, run **setup.exe** (Windows) or **einstall** (Linux) from the CD.
3. Windows — Use [**Get Key**] to request a permanent installation key, or choose [**Install Evaluation**] for a temporary evaluation version.

Linux — Use [**Get Key**] to request an installation key.

## Support

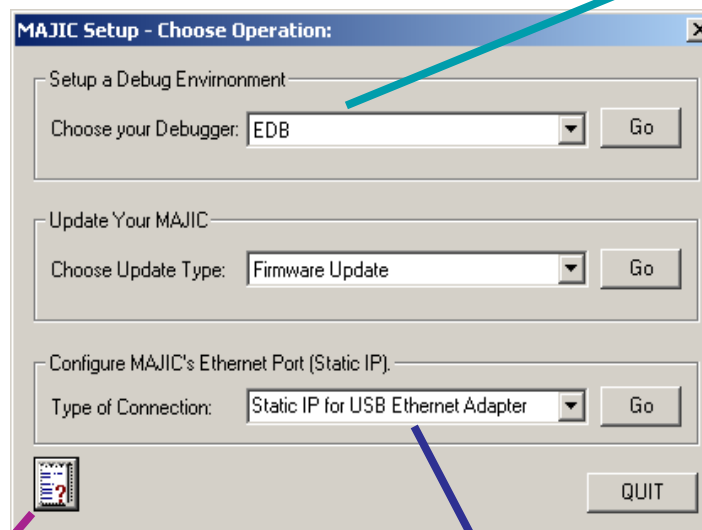
The EDT Documentation Index provides easy access to installed documentation and application notes.

Windows — Open the **EDT Documentation Index** via the Setup Wizard button, or the Windows [**START**] **Programs > EPI Tools - EDTx** menu.

Linux — Open **./manuals/edtX\_doc\_index.html** in your EDT package to view the documentation index.

The documentation and index file are also available in the **manuals** directory on the CD.

For additional help, please contact EPI Technical Support or visit our web site.



## Debugger Setup

Windows — Use the [**START**] button to run the MAJIC Setup Wizard from the **Programs > EPI Tools - EDTx** menu. Choose your debugger from the list, then click [**Go**] to assign a project name, configure the MAJIC® probe, and prepare target initialization files.

Linux — Please see the *Using a MAJIC® Probe on a Linux PC* application note, available via the EDT Documentation Index.

**Note:** Target configuration files for many common reference platforms are provided in the **targets** directory of your EDT software installation. On Windows, you can select an existing target configuration or create one using the MAJIC Setup Wizard. On Linux you can start in the appropriate **targets** directory or copy the configuration files to your project's build directory.

Chapter 3 of the *MAJIC® User's Manual* has details on MAJIC® probe and software configuration. Application notes for common debug environments are also available via the EDT Documentation Index.

## Ethernet Setup

The easiest way to set up an Ethernet connection is to program a Static IP address into the MAJIC® probe using a temporary serial port connection. You will need to get a static IP address and optional host name from your IT manager. If you connect via a gateway, you will need to get gateway information as well.

Chapter 2 of the *MAJIC® User's Manual* has complete information on setting up an Ethernet connection.

See the *Using a USB Ethernet Adapter with a MAJIC® Probe* application note for details on using USB.

Windows — To set up an Ethernet LAN or USB/Ethernet connection, use the [**START**] button to run the Setup Wizard from the **Programs > EPI Tools - EDTx** menu.

Select the type of connection (LAN or USB), then click [**Go**] to step through the wizard. Enter your network parameters, then choose the COM port you will use to program these settings.

Linux — Please see the *Using a MAJIC® Probe on a Linux PC* application note.