

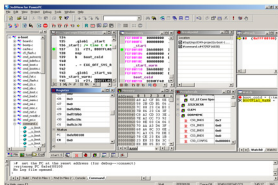
# JediView for PowerPC

## Integrated Development Environment (IDE)

Ideal development tools for PowerPC with a friendly interface

The JediView Integrated Development Environment (IDE) is an application that provides a simple, versatile graphical user interface and tool for developing computer software. Through JediView, you can develop a program, library, or other executable code to run on different computer systems using different programming languages.

JediView IDE includes an editor, a Search Engine, a debugger, a project manager, and other application development tools. JediView also supplies some useful Add-ons, such as Source Browse, CVS-Ins, and Programming Flash.



### Highlights of JediView IDE:

- Support Freescale MPC5XX, MPC52XX, MPC8XX, MPC82XX, MPC83XX, MPC85XX family processors
- Support C/C++ language and assembly programming-level debugging
- Support tracing and debugging the codes with BSP such as u-boot, Linux, VxWorks and uCOS II etc
- Real-time debugging: Single step, free run, reset, hardware of software breakpoints and jump etc
- Hardware Diagnostics to detect if there's any problem with CPU, RAM or Flash on the board
- Windows for CPU and Registers, Memory, Variable and Stack to check and modify the contents
- Watch window, can be used to add the custom register, memory address and variable, and convenient to check them
- In-circuit Flash programming, support more than 200 kinds of Flash and can add new type of Flash easily refer to our document.
- Strong technology support and excellent service for the developers

## USB TAP in-circuit Emulator for PowerPC processors

Supporting JTAG/BDM/COP interface

### Highlights of USB TAP ICE:

- Support Freescale MPC5XX, MPC51XX, MPC52XX, MPC7XX, MPC8XX, MPC82XX, MPC83XX, MPC85XX and MPC86XX family processors
- High-speed USB 2.0 connectivity
- Device is self-powered, requiring no external power supply
- Run-control visibility and control
- Gain optimal performance:
  - Split-second single-step execution
  - Fast code downloads to target, depending on processor and target design
  - Control and debug your software running in-target, with minimal intrusion into target operation
- Use software or hardware breakpoints:
  - Crash-proof control of the target processor
  - Obtain and modify register contents
- Display and modify memory
- Run/stop/step/reset
- Control instruction execution
- Flash memory programming
- Low voltage target: 1.8~3.3V
- Fully integrated with JediView or CodeWarrior Integrated Development Environment (IDE)
- Dimension of USB TAP: 5.875 inches x 3.0 inches x 1.25 inch (L x W x H)



Micetek International Inc.

Headquarter (Taichung)

Addr: 7F, No.303, Chungming S. Rd.

Taichung 403, Taiwan

Tel:+886-4-23026158 Fax:+886-4-23026268

Shanghai office

Addr: Rm 2802, Building A, No.1 Lane 137, Baitan Rd.,

Pudong Dist., Shanghai, 200963 China

Tel:+86-21-32020061 Fax:+86-21-62712731

**MICROTEK**  
An Embedded Tools Company